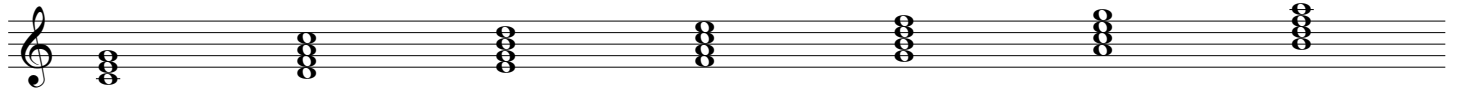
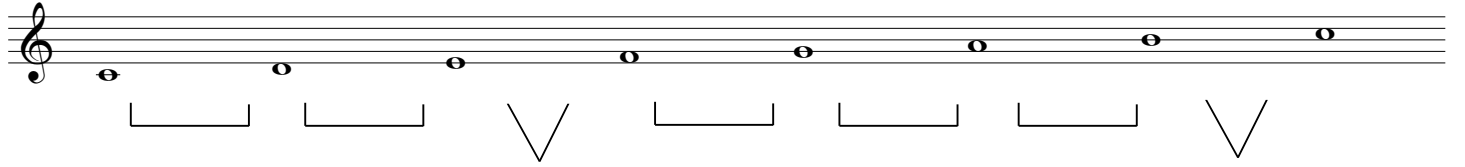


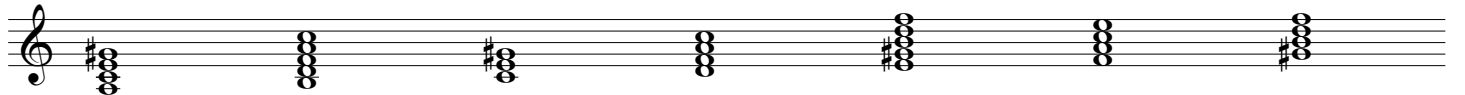
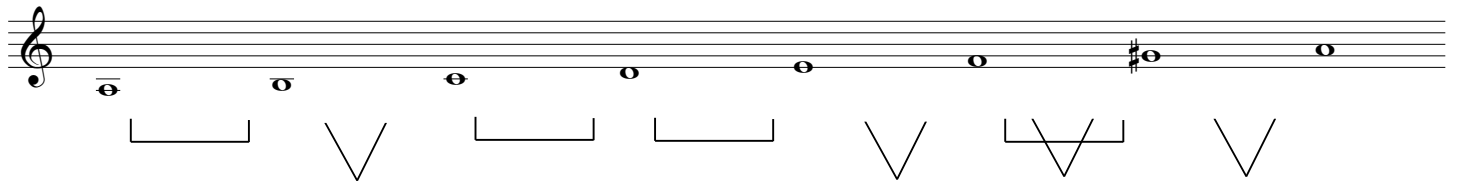
# Major & Minor Chords

## Major



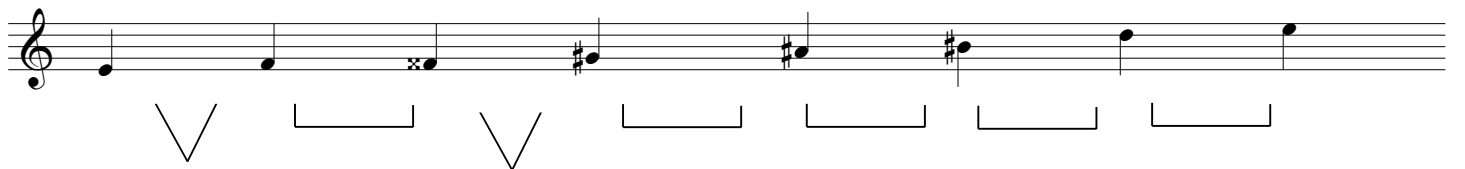
<b>I</b>	<b>II</b>	<b>III</b>	<b>IV</b>	<b>V</b>	<b>VI</b>	<b>VII</b>
<b>C</b>	<b>D-7</b>	<b>E-7</b>	<b>F<sub>Δ</sub></b>	<b>G7</b>	<b>A-7</b>	<b>B-7<sub>b5</sub> (ø)</b>
Ionian	Dorian Minor Blues	Phrygian	Lydian #4	Myxolydian Blues	Aeolian Parallel minor	Locrian Halfdiminished

## Harmonic Minor



<b>I</b>	<b>II</b>	<b>III</b>	<b>IV</b>	<b>V</b>	<b>VI</b>	<b>VII</b>
<b>A-<sub>Δ</sub>7</b>	<b>B-7<sub>b5(b9)</sub> (ø)</b>	<b>C+</b>	<b>D-7</b>	<b>E7<sub>b9</sub></b>	<b>F<sub>Δ</sub>7</b>	<b>G<sub>#</sub></b>

## V minor: Diminished Whole Tone Scale



**E7<sub>ALT</sub> E7<sub>#9</sub> E+7 E7+9 (b 9 # 9 # 4 # 5)**